

Creative Knitting Spr_18

REVISION FILE

Internet: Annies-Publishing.com • email: Pattern_Services@Annies-Publishing.com

Mail: 306 East Parr Road, Berne, IN 46711 • Phone: (260) 849-4874

Although we make every effort to prevent errors from being published, we regret that they do occasionally occur and apologize for any inconvenience this may cause. Please note the following revision(s) shown below in red. Please note there may be more than one revision to a pattern depending on what reprint number you may have or what date you purchased your electronic pattern.

Cabotage Cardigan

Product Code M11225, Page Number

(2/28/2022) BS

page 15

Pattern Stitch

Scallop St

Row 8: P3, *p2, yo, p1, yo, p3tog, sssp, yo, p1, yo, p2; rep from * to last 3 sts, **p3**.

Cruising Cowlette and Learning Mosaic Lace

Product Code M11225, Page Number 32

(1/19/2018) BS<EJS

page 33

See attached pdf for revised Chart A.

Shifting Cypress

Product Code M11225, Page Number 64

(8/3/2018) BS<SM

page 65

Pattern Stitches

Border Pat (st count varies)

Row 9: P1, k1, yo, k1, k2tog, p1, sssk, k1—8 sts.

page 66

Wedge 1

Rows 31–60: Rep [Rows **21–30**] 3 times—1 st rem in work before first marker; 59 sts are now out of work.

Elland Shawl

Product Code M11225, Page Number 69

(1/10/2018) BS<SM

page 70

Pattern Stitches

Right Lace Pat

Row 11: P2, k2tog, **p2**; ***k2**, p2, k2, k2tog, k4, p2, k2tog, p2; rep from * to marker—16 sts per rep.

Cruising Cowlette, page 33

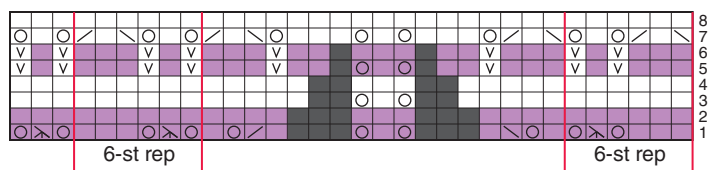


CHART A