

Creative Knitting Aut_18

REVISION FILE

Internet: Annies-Publishing.com • email: Pattern_Services@Annies-Publishing.com

Mail: 306 East Parr Road, Berne, IN 46711 • Phone: (260) 849-4874

Although we make every effort to prevent errors from being published, we regret that they do occasionally occur and apologize for any inconvenience this may cause. Please note the following revision(s) shown below in red. Please note there may be more than one revision to a pattern depending on what reprint number you may have or what date you purchased your electronic pattern.

Cranberry Cider Cardigan

Product Code M11227, Page Number 61

(9/20/2018) BS<SM

page 62

Pattern Stitches

Body (st count varies by size)

Row 1 (RS): P0 (0, 1, 0, 2), k2 (0, 2, 1, 2), pm; [k1, p2, k2] 14 (16, 17, 19, 20) times, pm; k1, p3, k1, pm; [k2, p2, k1] 14 (16, 17, 19, 20) times, pm; k2 (0, 2, 1, 2), p0 (0, 1, 0, 2).

Row 2: K0 (0, 0, 0, 1), p2 (0, 3, 1, 3), sm; *k2, p3; rep from * to marker, sm; k2, p1, k2, sm; **p3, k2; rep from ** to marker, sm; p2 (0, 3, 1, 3), k0 (0, 0, 0, 1).

Row 3: K1 (0, 2, 0, 3), p1 (0, 1, 1, 1), sm; *p1, k3, p1; rep from * to marker, sm; p1, k3, p1, sm; **p1, k3, p1; rep from ** to marker, sm; p1 (0, 1, 1, 1), k1 (0, 2, 0, 3).

Row 4: P0 (0, 1, 0, 2), k2 (0, 2, 1, 2), sm; *p3, k2; rep from * to marker, sm; p5, sm; **k2, p3; rep from ** to marker, sm; k2 (0, 2, 1, 2), p0 (0, 1, 0, 2).

Row 5: K0 (0, 0, 0, 1), p1 (0, 2, 0, 2), k1 (0, 1, 1, 1), sm; *k2, p2, k1; rep from * to marker, sm; k2, p1, k2, sm; **k1, p2, k2; rep from ** to marker, sm; k1 (0, 1, 1, 1), p1 (0, 2, 0, 2), k0 (0, 0, 0, 1).

Row 6: K0 (0, 1, 0, 2), p2 (0, 2, 1, 2), sm; *p1, k2, p2; rep from * to marker, sm; p1, k3, p1, sm; **p2, k2, p1; rep from ** to marker, sm; p2 (0, 2, 1, 2), k0 (0, 1, 0, 2).

Row 7: P0 (0, 0, 0, 1), k2 (0, 3, 1, 3), sm; *p2, k3; rep from * to marker, sm; p2, k1, p2, sm; **k3, p2; rep from ** to marker, sm; k2 (0, 3, 1, 3), p0 (0, 0, 0, 1).

Row 8: P1 (0, 2, 0, 3), k1 (0, 1, 1, 1), sm; *k1, p3, k1; rep from * to marker, sm; k1, p3, k1, sm; **k1, p3, k1; rep from ** to marker, sm; k1 (0, 1, 1, 1), p1 (0, 2, 0, 3).

Row 9: K0 (0, 1, 0, 2), p2 (0, 2, 1, 2), sm; *k3, p2; rep from * to marker, sm; k5, sm; **p2, k3; rep from ** to marker, sm; p2 (0, 2, 1, 2), k0 (0, 1, 0, 2).

Row 10: P0 (0, 0, 0, 1), k1 (0, 2, 0, 2), p1 (0, 1, 1, 1), sm; *p2, k2, p1; rep from * to marker, sm; p2, k1, p2, sm; **p1, k2, p2; rep from ** to marker, sm; p1 (0, 1, 1, 1), k1 (0, 2, 0, 2), p0 (0, 0, 0, 1).

Row 11: P0 (0, 1, 0, 2), k2 (0, 2, 1, 2), sm; *k1, p2, k2; rep from * to marker, sm; k1, p3, k1, sm; **k2, p2, k1; rep from ** to marker, sm; k2 (0, 2, 1, 2), p0 (0, 1, 0, 2).

Row 12: K0 (0, 0, 0, 1), p2 (0, 3, 1, 3), sm; *k2, p3; rep from * to marker, sm; k2, p1, k2, sm; **p3, k2; rep from ** to marker, sm; p2 (0, 3, 1, 3), k0 (0, 0, 0, 1).

page 65

See attached page for revised Body Chart.

Turmeric Tea Hat & Scarf

Product Code M11227, Page Number 29

(7/5/2018) BS

page 32

Please see attached pdf for Scarf key.

Creative Knitting Aut_18

REVISION FILE

Internet: Annies-Publishing.com • email: Pattern_Services@Annies-Publishing.com

Mail: 306 East Parr Road, Berne, IN 46711 • Phone: (260) 849-4874

Although we make every effort to prevent errors from being published, we regret that they do occasionally occur and apologize for any inconvenience this may cause. Please note the following revision(s) shown below in red. Please note there may be more than one revision to a pattern depending on what reprint number you may have or what date you purchased your electronic pattern.

Jasmine Tea Hat & Mitts

Product Code M11227, Page Number 33

(1/23/2019) BS<LB

page 37

Mitts

Bobbles Section

Rnd 3 (Bobbles with D): K3, *MB2, k3; rep from * to last 3 sts, MB2, k2. Cut D.

Rnd 6 (Bobbles with B): K1, *MB2, k3; rep from * to last st, MB2. Cut B.

Thumb Gusset

Rep [Rnds 4–6] 6 times—18 gusset sts between markers.

Pumpkin Spice Hat & Mitts Set

Product Code M11227, Page Number 38

(7/27/2018) BS

page 39

Hat

Body

Rnd 1 (inc): K5, M1L, [k11, M1L] 7 times, k6—96 sts

Creative Knitting Aut_18

REVISION FILE

Internet: Annies-Publishing.com • email: Pattern_Services@Annies-Publishing.com

Mail: 306 East Parr Road, Berne, IN 46711 • Phone: (260) 849-4874

Although we make every effort to prevent errors from being published, we regret that they do occasionally occur and apologize for any inconvenience this may cause. Please note the following revision(s) shown below in red. Please note there may be more than one revision to a pattern depending on what reprint number you may have or what date you purchased your electronic pattern.

Chamomile Poncho

Product Code M11227, Page Number 15

(7/5/2018) BS<LS

page 16

Special Abbreviation

Make 1 Right (MIR): Insert LH needle from back to front under horizontal strand between last st worked and next st on LH needle; knit into front of resulting loop.

Poncho

Triangle

Row 4 (RS): K3, MIR, MIL, k3—8 sts.

(7/12/2018) BS<LS

page 17

Row 31: K4, sl 2 wyib, *k2, sl 2 wyib; rep from * to last 3 sts, change to B, k3.

See attached pdfs for corrected chart and key.

Espresso Poncho

Product Code M11227, Page Number 18

(10/11/2018) BS<CQ

page 20

Back

Body

Setup Row (WS): K1 (edge st), [k2, p6] 3 times, [k2, p2] twice, k3, p4, k3, [p2, k2] twice, [p6, k2] 7 (8, 9) times, p6, [k2, p2] twice, k3, p4, k3, [p2, k2] twice, [p6, k2] 3 times, k1 (edge st).

Creative Knitting Aut_18

REVISION FILE

Internet: Annies-Publishing.com • email: Pattern_Services@Annies-Publishing.com

Mail: 306 East Parr Road, Berne, IN 46711 • Phone: (260) 849-4874

Although we make every effort to prevent errors from being published, we regret that they do occasionally occur and apologize for any inconvenience this may cause. Please note the following revision(s) shown below in red. Please note there may be more than one revision to a pattern depending on what reprint number you may have or what date you purchased your electronic pattern.

Mulberry Hooded Wrap

Product Code M11227, Page Number 25

(7/11/2018) BS<CF

page 26

Gauge

8 sts and 12 rows = 4 inches/10cm in Seed st.

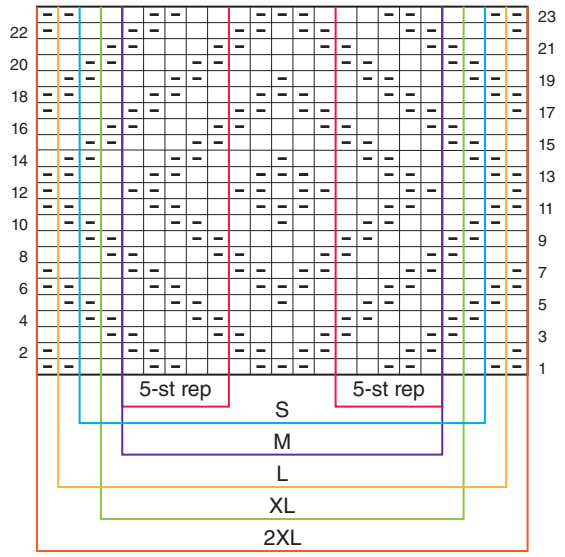
Wrap

Work [Rows 1–6] of Wrap pat until rectangle measures 48 inches.

Chamomile Poncho

STITCH KEY

- K on RS, p on WS
- P on RS, k on WS
- SI 1 pwise with yarn held to RS
- M1L
- M1R
- Color A
- Color B



BODY CHART

STITCH KEY

- | Knit on RS, purl on WS
- Purl on RS, knit on WS
- Yo
- ∨ Kfb
- ∧ K2tog
- λ Ssk